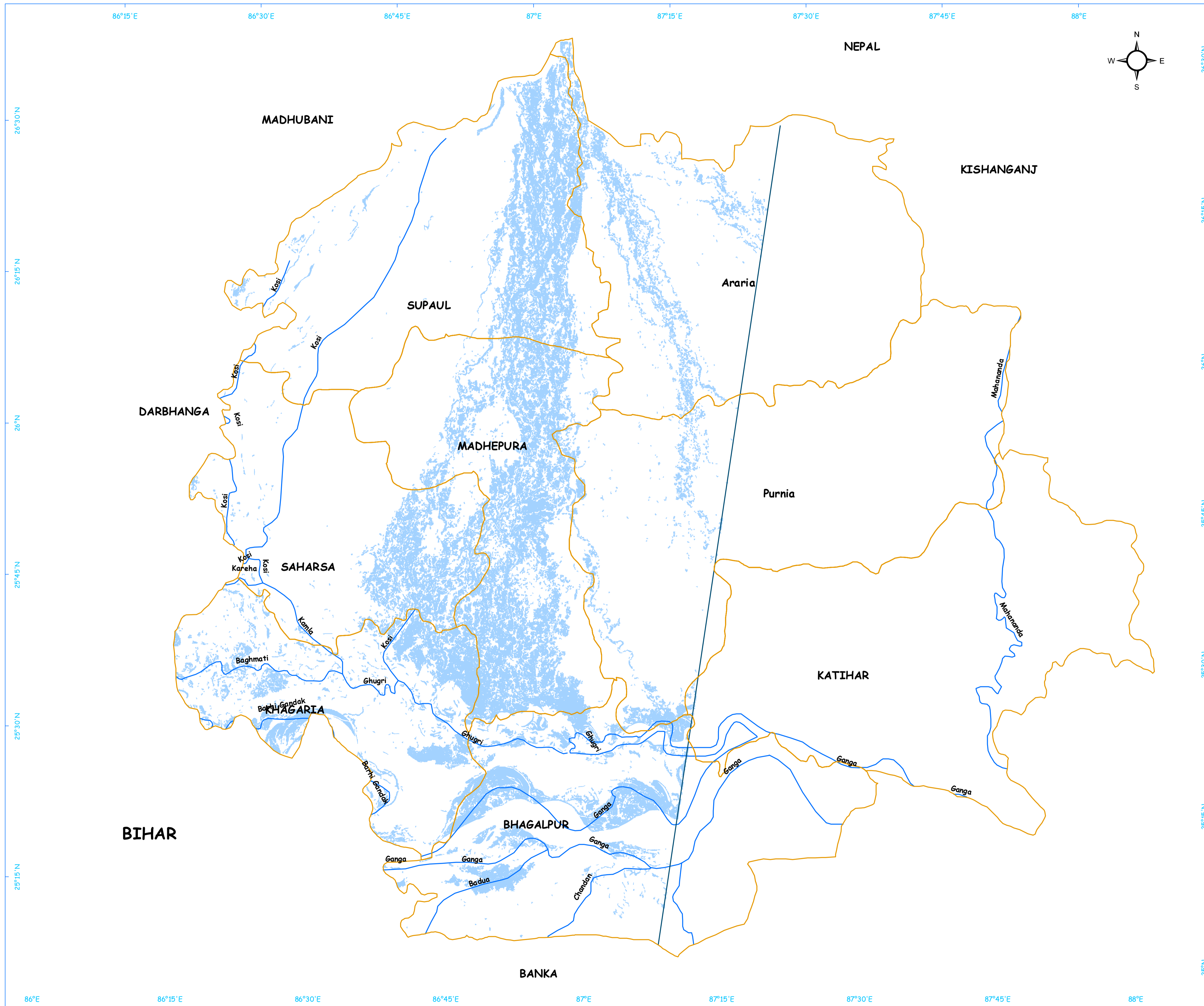


Flood Inundation Map of Part Of North Bihar State

[Based on Radarsat-2 Satellite Image of 29th August 2008]



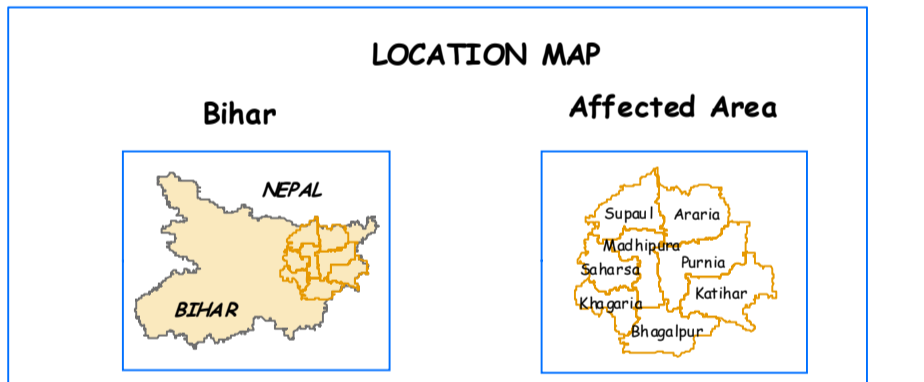
fmis

Bihar

Legend

- District Boundary
- Block Boundary
- Village Boundary
- International Boundary
- Inundation
- River
- Embankment
- Canal
- National Highway
- State Highway
- Railway line
- Railway Stn.
- End Of Satellite Coverage
- ★ Breach Point
- ▲ River Gauge Station
- District Headquarter
- Settlement

- HYDROLOGICAL STATUS**
- ▲ Above Danger Level: Rising (red), Constant (red), Falling (red)
 - ▲ Below Danger Level: Rising (magenta), Constant (magenta), Falling (magenta)
 - + Data Not Available
 - + Trend Not Available



Projection: Lambert Conformal Conic
 Datum: wgs 84
 Pixel size: 25m X 25m
 Scale: 1:350,000

WATER LEVEL AS ON 29th August 2008

RIVER	DISTRICT	STATION	WL	DL
1. Kosi	Khagaria	Baltara	33.55	33.68
2. Kosi	Supaul	Basua	31.75	31.09
3. Ganga	Bhagalpur	Bhagalpur	37.51	36.58
4. Mahananda	Purnea	Dhengahat	46.04	47.75
5. Mahananda	Katihar	Jhava	32.68	33.85
6. Ganga	Bhagalpur	Kahalgaon	30.95	30
7. Burhi Gandak	Khagaria	Khagaria	36.17	35.65
8. Kosi	Katihar	Kursela	31.58	31.4

Inundation Layer provided by DSC; NRSA, Hyderabad

Prepared Under
 world bank-DFID Technical Assistance
 By
 Flood Management Information System Cell
 water resources department
 Government of Bihar
 eMail:fmisc_bihar@yahoo.co.in

FMISB/DMD/MAP/IND/BDT/29082008/A1/O05