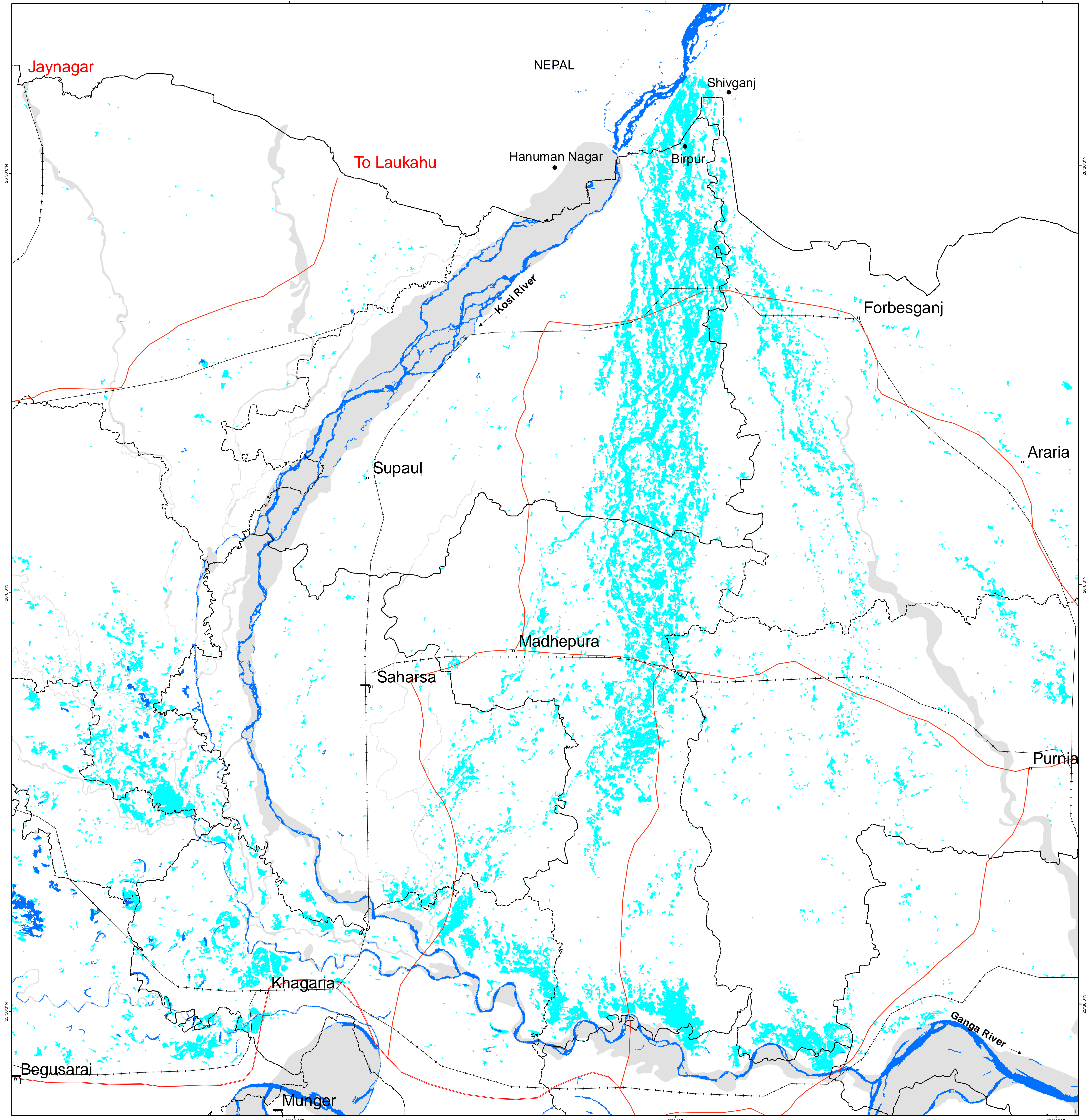


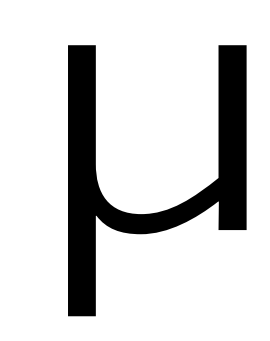
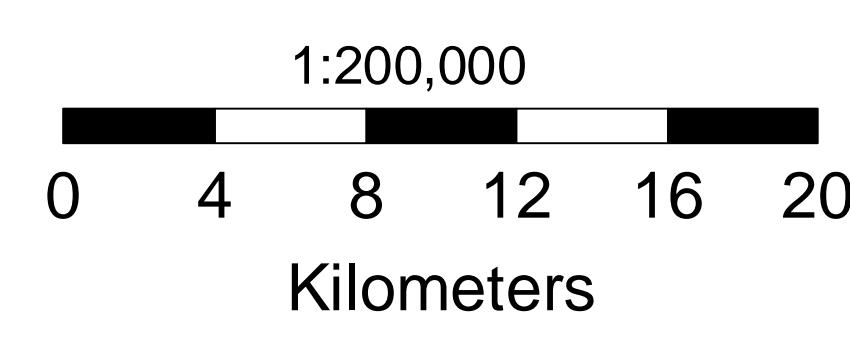
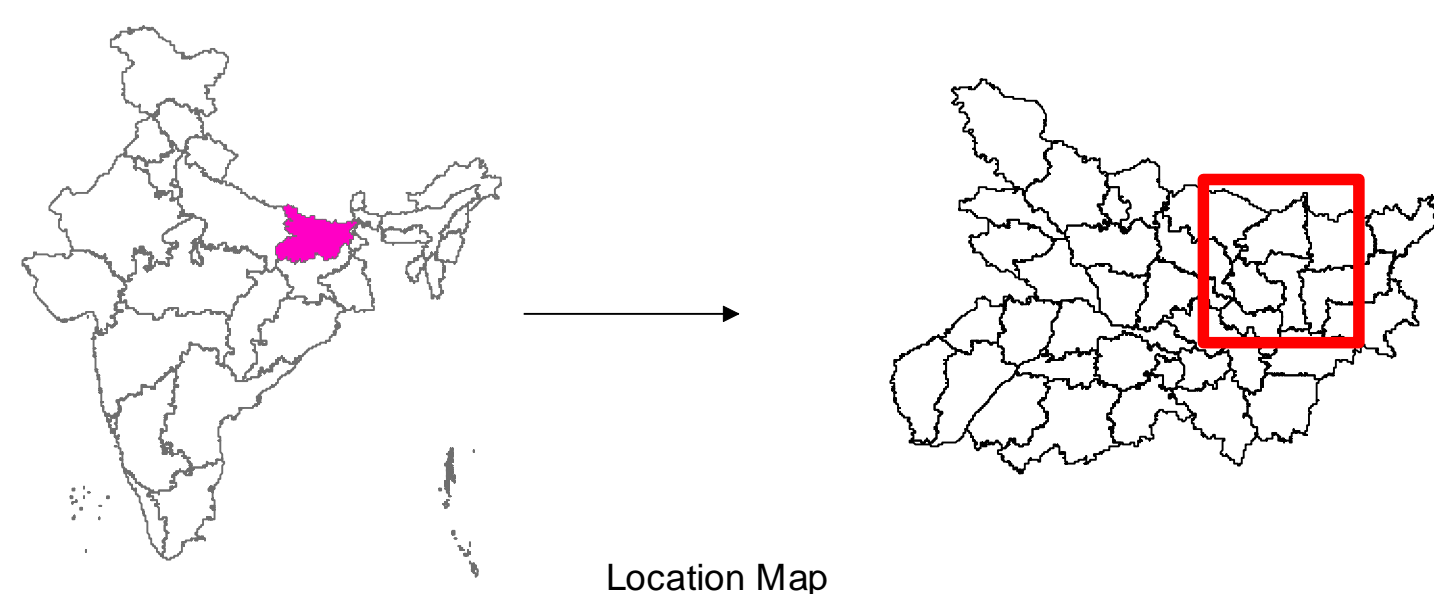
Flood Inundated areas in part of Bihar State, India & adjacent area of Nepal

Based on the analysis of IRS-P6 data of 23-August-2008 & Radarsat data of 22-August-2008



Legend

Airport	District HQ	Major Roads	Other Roads	Railway	International Boundary	State Boundary	District Boundary
River Bank	Normal river/water bodies	Flood Inundation					



Decision Support Centre (DSC)
RS & GIS Applications Area
National Remote Sensing Agency
Dept. of Space, Govt. of India
HYDERABAD- 500 037
E-Mail: flood@nrsa.gov.in
nrsa